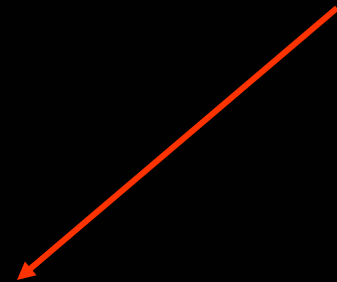
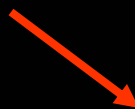
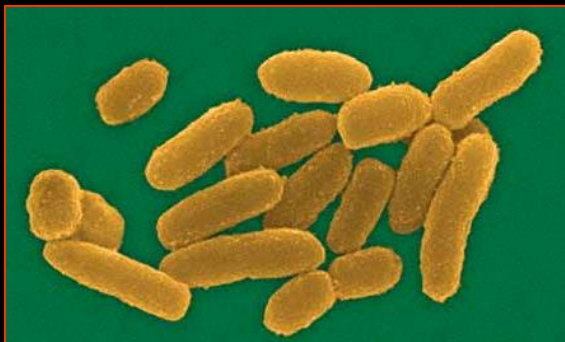


The Black Death



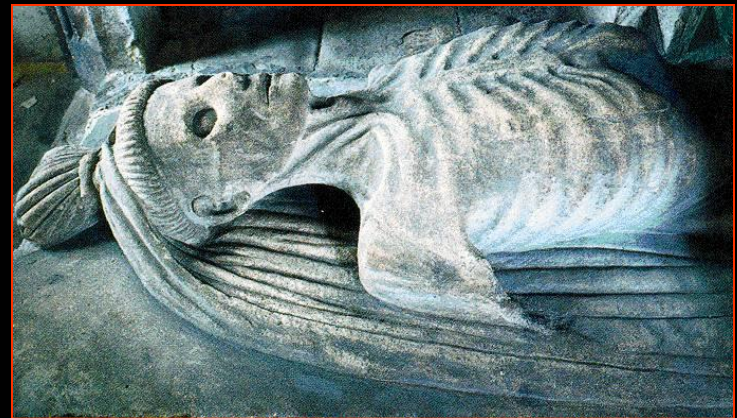
1347 - 1351

The Culprits

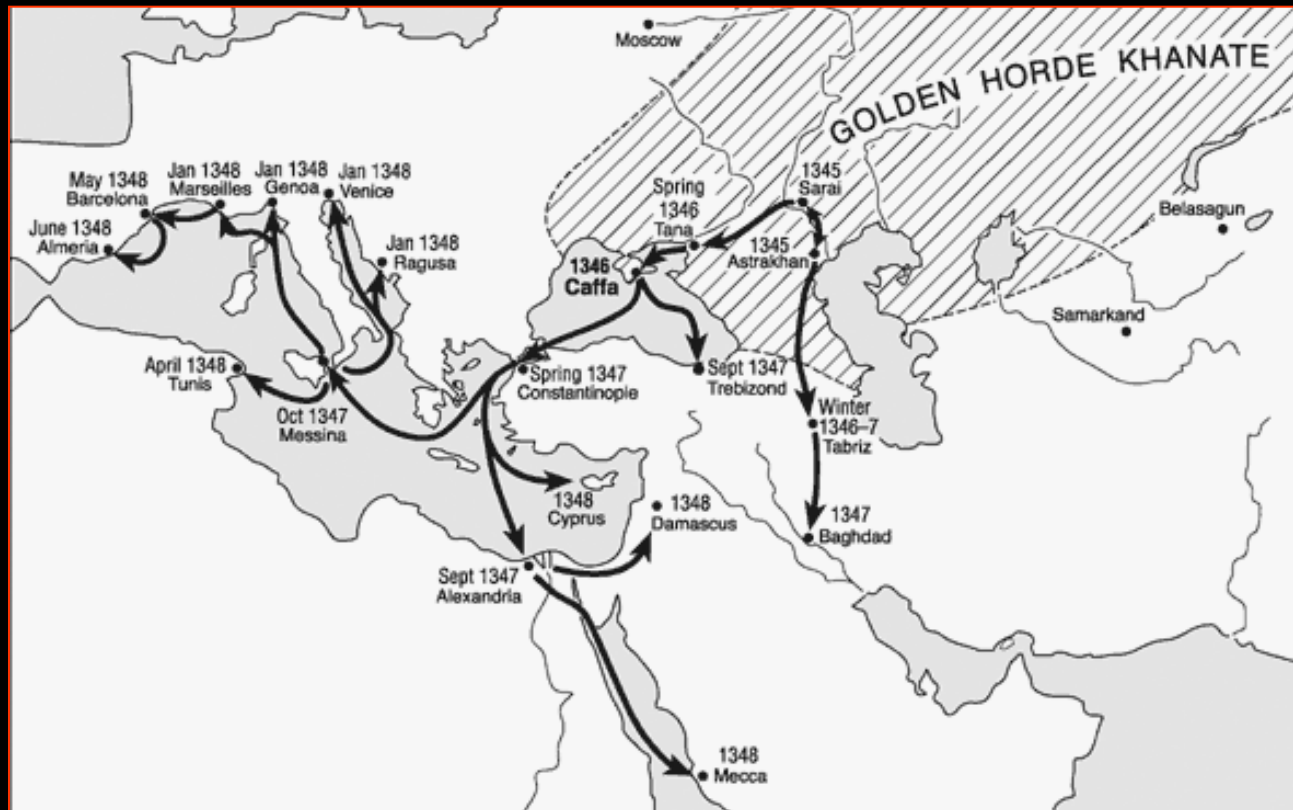


The Famine of 1315-1317

- ☠ By 1300 Europeans were farming almost all the land they could cultivate.
- ☠ A population crisis developed.
- ☠ Climate changes in Europe produced three years of crop failures between 1315-17 because of excessive rain.
- ☠ As many as 15% of the peasants in some English villages died.
- ☠ One consequence of starvation & poverty was susceptibility to disease.



1347: Plague Reaches Constantinople!



The Symptoms



Bulbous

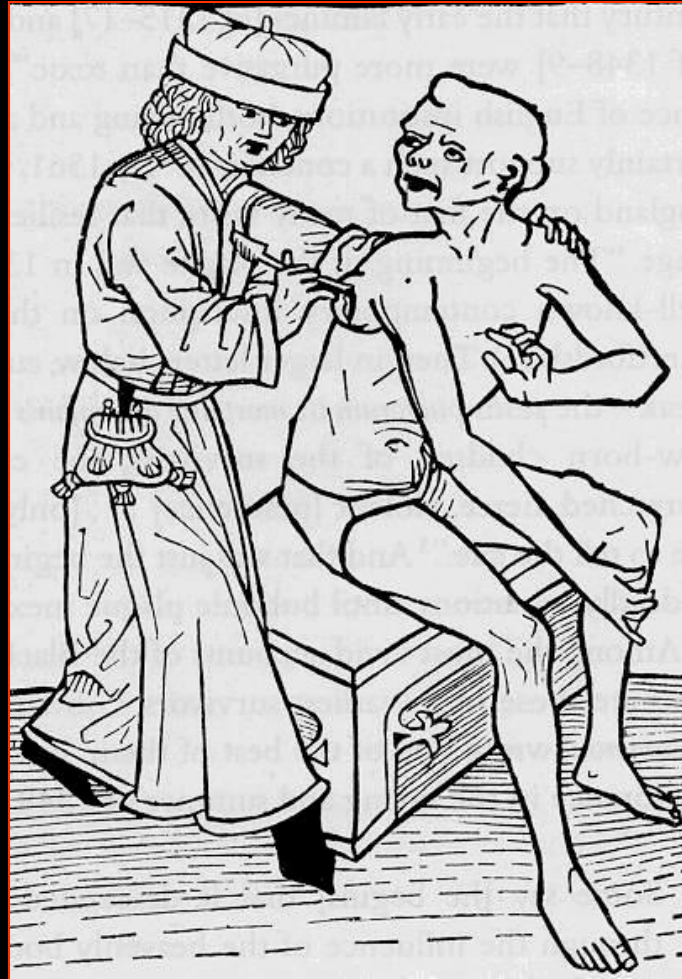
**Septicemia Form:
almost 100%
mortality rate.**



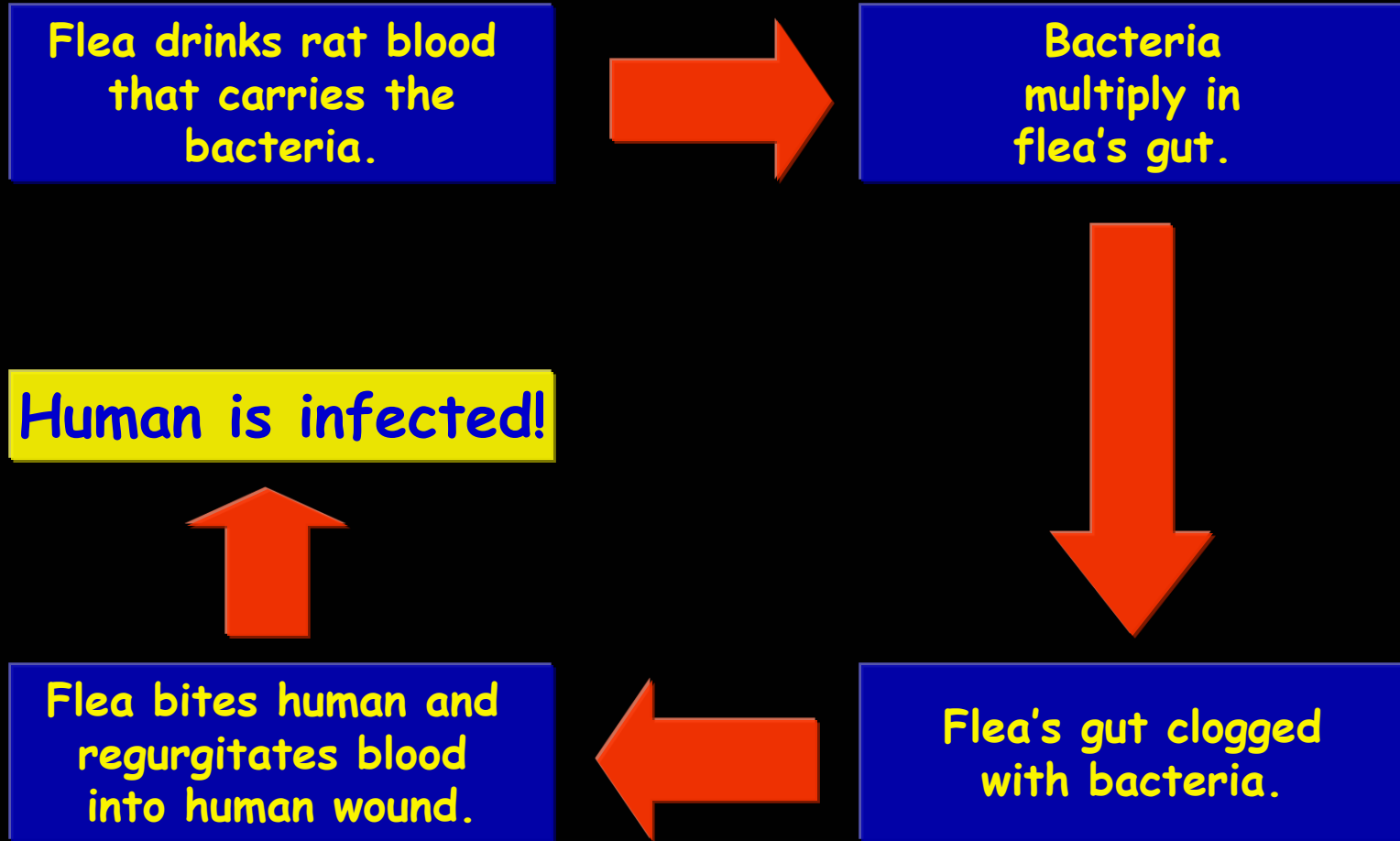
From the *Toggenburg Bible*, 1411



Lancing a Buboe



The Disease Cycle



Medieval Art & the Plague



Bring out your dead!

Medieval Art & the Plague



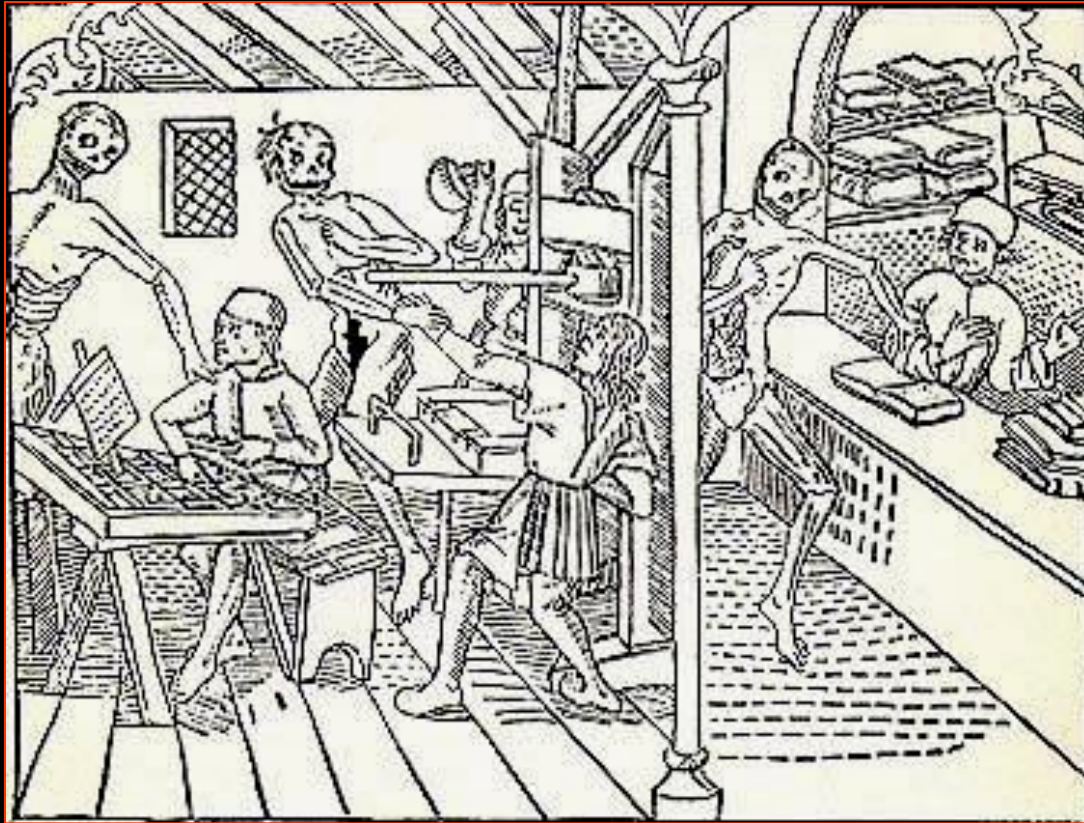
An obsession
with death.

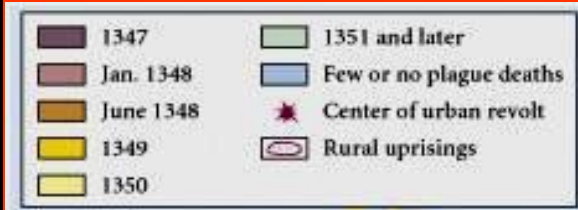


Boccaccio in *The Decameron*

*The victims ate lunch with
their friends and dinner with
their ancestors.*

The *Danse Macabre*





Attempts to Stop the Plague



A Doctor's
Robe



"Leeching"

Attempts to Stop the Plague



Flagellanti:
Self-inflicted "penance" for our sins!

Attempts to Stop the Plague

Pogroms - violent massacre or persecution of an ethnic or religious group

August 1349, the Jewish community of Mainz and Cologne were exterminated.



"Jew" hat



"Golden Circle"
obligatory badge

Death Triumphant! A Major Artistic Theme



The Mortality Rate

35% - 70% depending on the town.

Overall it killed 1/3 of Europe's population.

25,000,000 dead !!!

What were the
political,
economic,
and social effects
of the Black Death??

- Political:
 - Increase of urban and rural violence.
 - Peasants rebel
 - 1358 in Jacquerie peasants lash out for two weeks and it takes ferocious attempts to finally control them.
 - The Churches power was weakened.
 - The people criticized the religious officials who could not cure the plague and banish the disease.
 - Increase of secular politicians
 - Secular: the state of being separate from religion.
 - Example: you go to a secular school.

- Economic:
 - Villages become abandoned.
 - The peasants who are still alive get increased wages due to shortage of labor.
 - Cheaper land prices

- Social:
 - Chaotic- the plague is viewed as God's judgment against the world.
 - Overwhelming grief
 - Increased social mobility
 - Literature and art of the time reflected the death and grief that surrounded it.